

ST. ALDHELM'S VA CHURCH PRIMARY SCHOOL  
CHELYNCH PARK, DOULTING, SHEPTON MALLET, SOMERSET, BA4 4PL

Tel: (01749) 880376

[www.staldhelms.co.uk](http://www.staldhelms.co.uk)

[staldhelmsoffice@educ.somerset.gov.uk](mailto:staldhelmsoffice@educ.somerset.gov.uk)

HEADTEACHER: Mrs P Cohen

# ST. ALDHELM'S NEWS

## March and April 2022

Dear Parents and Carers

It has been wonderful to have welcomed parents back into school for events this term. From Learning Showcase, Sharing Brass and Celebration Worship to a fun PTA Bingo evening and our Easter Service in church – the first one since Christmas 2019! It has felt more like 'our school' again and we are so proud and happy to share it together.

Learning has been our prime focus, with so many children making good developments in their learning behaviours as well as positive progress in their knowledge and skills. We hope that you have been able to see this in your child's learning, from teachers in parents' evening and through their books in Showcase. We will continue to drive forwards in the summer term to support children to close gaps and consolidate as well as tackle new learning. With your support to work hard on Home Learning too, we hope children will be able to show and apply their learning for assessments in May and June. We know it's been a joint effort this year and we're starting to see some light. Let's keep this up to do the best for our children and bring them back on track. Thank you for your support.

Please read on for Celebration Certificates Term 4 **page 2**; Easter Service and Thank you Mrs Body **page 3**; Nightingales Trip **page 4-6**; World Book Day **pages 7**; Autism Acceptance Week **page 8**; YR Vets and Pets **page 9**; Supporting Mental Health **page 10**; Online Safety Message **page 11**; and Message from Governors & PTA News **page 12&13**.

I hope you have a happy Easter and enjoyable family break. Hopefully the message shared by Magpies and Falcons in church have inspired you for the Easter celebration to come.

Kind regards  
*Pippa Cohen*  
Headteacher

### School Dates:

#### Easter Holiday 9<sup>th</sup> – 24<sup>th</sup> April

|          |                                       |
|----------|---------------------------------------|
| 25.04.22 | Term 5 starts for all children        |
|          | Y6 Swimming Sessions start            |
|          | Change Project Workshops              |
| 27.04.22 | Y2 Toys & Games Workshop              |
| 28.04.22 | Y5/6 Maths at Whitstone 3-4:15pm      |
| 29.04.22 | Y4/5/6 Great Wood Meeting 3:30pm      |
| 02.05.22 | Bank Holiday                          |
| 09.05.22 | Y6 SATs (Mon-Thurs)                   |
| 12.05.22 | Willow Theatre Show & Workshop        |
| 16.05.22 | YR&Y6 Weight & Height Check           |
| 17.05.22 | Photographer – classes & leavers      |
| 23.05.22 | Y4/5/6 Residential Trip to Great Wood |
| 24.05.22 | ↓                                     |
| 25.05.22 | Learning Showcase time tbc            |
| 27.05.22 | Platinum Jubilee Celebrations         |
|          | End of Term 5                         |

#### Half Term 28<sup>th</sup> May- 5<sup>th</sup> June

#### (Bank Holidays 2<sup>nd</sup> & 3<sup>rd</sup> June)

|          |  |
|----------|--|
| 06.06.22 | Term 6 starts for all children                                 |
| 10.06.22 | Celebration Worship  |
| 24.06.22 | INSET DAY – school closed to children                          |
| 06.07.22 | Y6 Transition Day (Whitstone, Ansford Academy) & Moving Up Day |
| 07.07.22 | Sports Day   |
| 08.07.22 | Reports Out  |
| 12.07.22 | Learning Showcase 2:30pm                                       |
| 18.07.22 | Last Y6 Swimming Session                                       |
| 21.07.22 | Leavers Celebration Worship tbc                                |
| 22.07.22 | Celebration Worship  |
|          | End of Term 6  |
| 25.07.22 | INSET DAY – school closed to children                          |
| 26.07.22 | INSET DAY – school closed to children                          |



A big well done to all the children who received certificates in Term 4 for their progress, success and achievement with their learning behaviours ☺





# Easter Service April 2022



Thank you to Magpies and Falcons for leading a very special Easter Service yesterday. This was the first opportunity we have had to hold a service in church since Christmas 2019 and it was special to be back. For many of our children this was a new experience and for some the first time they have spoken aloud to an audience.

We were very impressed with the way you shared the message about Easter, along with your beautiful art illustrations, poems and prayers. Reverend Jonathan didn't feel he could add much as you had done a wonderful job.

Thank you to Mrs Newman, Mrs Horton, Mrs Phillips and Miss Bayley who prepared the children for the service and to Reverend Jonathan for his message and blessing. Thank you too to the parents, grandparents and village friends who were also able to join us.

We also wished Mrs Body a special goodbye as she leaves our school this term. Mrs Body has cared for and supported many children in her 34 years of working at St Aldhelm's. We will miss you! We wish you all the best for your next chapter.



**Thank You &  
Good Luck  
Mrs Body xx**





# Nightingales School Trip to Lyme Regis



Year 1  
Nightingales  
visited  
Dinosaurland  
Fossil Museum  
in Lyme Regis  
to enhance  
and  
consolidate  
their Enquiry  
Learning about  
Mary Anning.

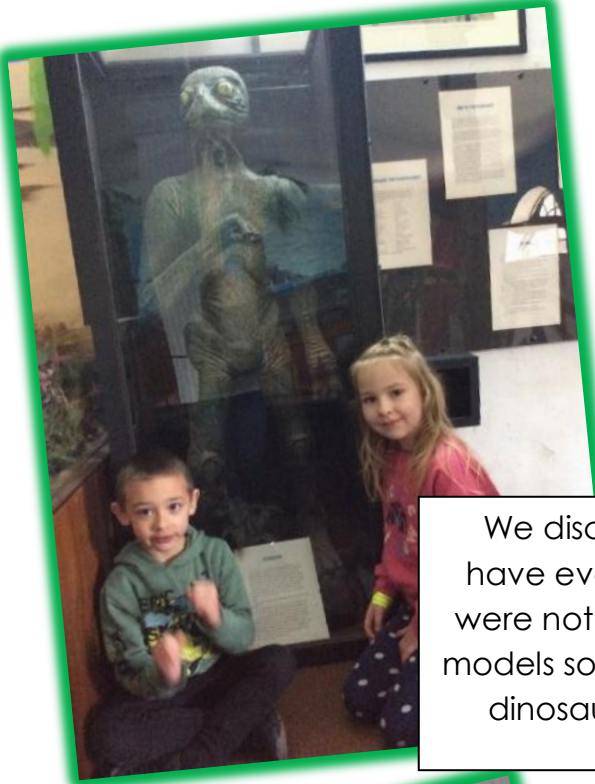


They enjoyed looking at  
fossilized dinosaur eggs,  
ammonites, trilobites, and  
many other creatures.

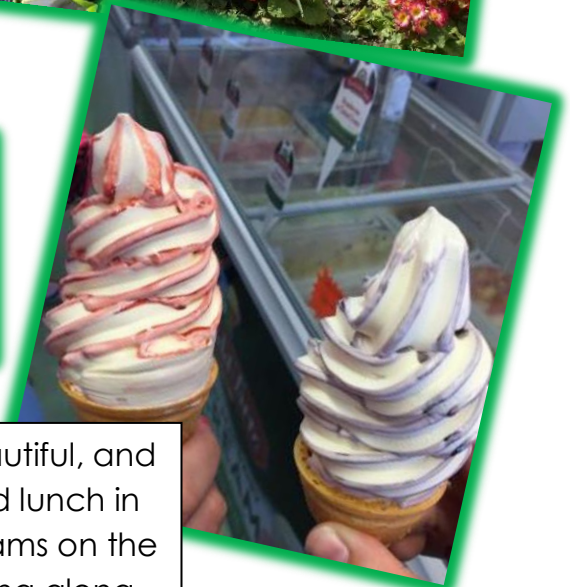


The museum houses the largest collection of fossils in the Southwest.  
The children then enjoyed a question-and-answer session with  
Museum owner and Palaeontologist Steve, whose collection of  
fossils were on display.





We discovered what humans may have evolved to look like if dinosaurs were not extinct and the children saw models so that they could see what the dinosaurs would have looked like.



The weather was beautiful, and Nightingales enjoyed lunch in the park and ice creams on the beach before walking along the sea wall to go fossil hunting!





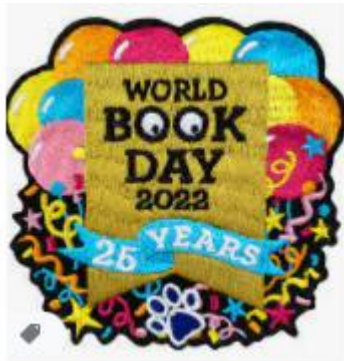
Nightingales worked brilliantly and collaboratively to look for fossils on Lyme Regis beach.



We found lots of ammonites in the rocks at Lyme Regis and some of the children were even lucky enough to find small fossils they could bring home.







*What a brilliant turn out of book characters we had this year!*



Welcome to the World Book Day Café!

Kingfishers and Magpies enjoyed spending the morning at the Book Café, sharing favourite books with each other. They read beautifully to each other, with both younger and older children taking turns to both read, and listen. We really enjoyed you visiting Maggies!

Kingfishers also thoroughly enjoyed the Red Time Story on World Book Day, where they were shocked we managed a HUGE 55 pages!



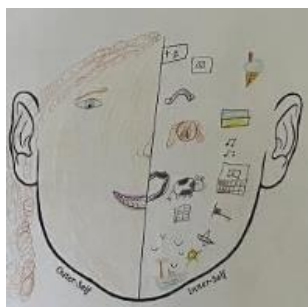




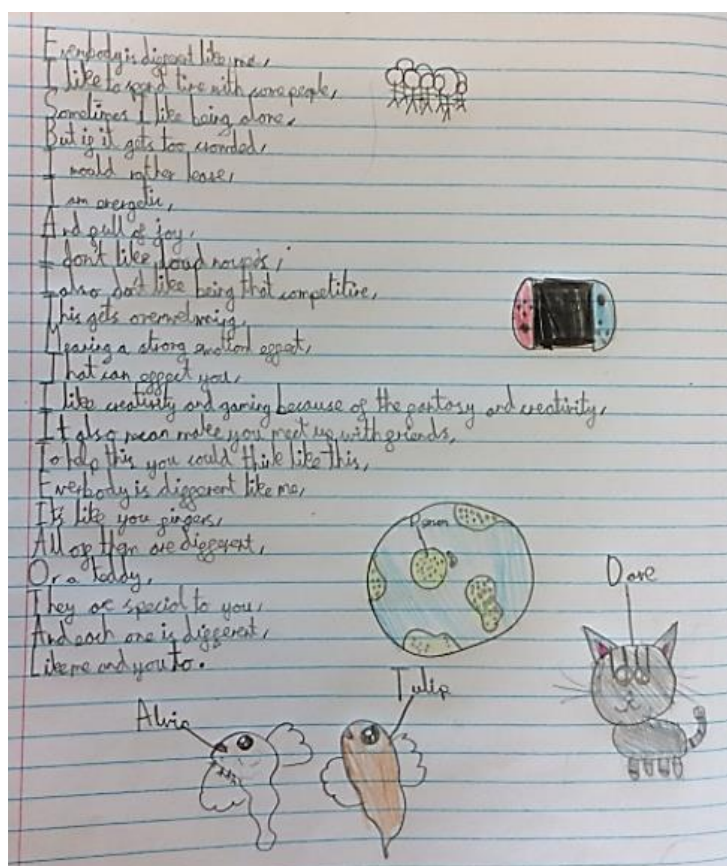
# AUTISM ACCEPTANCE WEEK

## March 2022

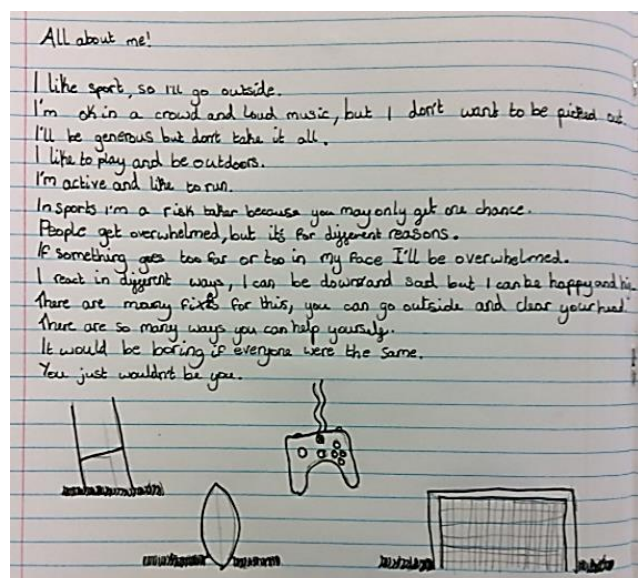
Across the school, during the week of the 28<sup>th</sup> March, we took part in Autism Acceptance Week. This was a time for the children to develop their understanding in order to help raise awareness and promote acceptance.



Autistic people often see, hear, feel and experience the world differently to other people. This can make the world an overwhelming and sometimes uneasy place. It is an important part of who they are as a person because it affects how they live their lives every day.



As a stimulus, we used a poem created by an autistic child called Eli, from the National Autistic Society. All classes explored how differences are important in the world, and how the world would be so boring if we all sang the same song. The children showed great reflection and curiosity. We were really impressed with how many children recognised that we can all feel overwhelmed and see the world in different ways. Some of the children created poems about this.





# Vets and Pets Week in Reception

A big Thank you to one of our lovely parents Mrs Bevan for bringing two, two-day old lambs for Reception Robins to meet and learn more about as part of their Vets and Pets Learning! Jessica (R) and Emily (Yr2) are budding young farmers, who have also helped to deliver lambs on the farm.



Reception Robins had a wonderful visit from Shepton Vets to talk about the role of a Vet and Veterinary nurse. They were taught about how to care for pets and met a brilliant patient, Misty, who was Greg the Vet's wonderful dog.







# Supporting Mental Health

## Parenting Support



Parenting isn't always easy. Although it's often amazing and rewarding to watch your children grow up, and to help them learn to be independent, it can also be really hard work. Here are some tips for looking after your child while also looking after yourself.

### Our Top Tips

- ☺ **Make sure they know you love them and are proud of them.** Even when things are busy or stressful, a word or a hug can reassure them a huge amount. Praise them for what they do well, and encourage them to try new things. Praising them for their effort rather than the outcome can be a lot more reassuring.
- ☺ **Be honest about your feelings - you don't have to be perfect.** We all get things wrong and wish hadn't said what we did from time to time. If this happens, say sorry to your child afterwards and explain why it happened. They will learn from you that it's okay to make mistakes and that it doesn't make you a bad person.
- ☺ **Be clear about what is and isn't acceptable - and tell them why.** Children need to know what is okay and what isn't, and what will happen if they don't respect the rules in place. Follow through on what you say as otherwise they may get confused or stop respecting the boundaries.
- ☺ **Own your own role - you are the parent, so don't be afraid to make the tough decisions.** If your child sees you are worried about their reaction and always give in to them, it can make them feel very powerful, which can be frightening. Children need to know that you are there to keep them safe. Be consistent and make sure that what you say is a consequence is something that you can follow through with.



Somerset County Council have launched a mobile health service for parents and young people in Somerset making it easier to get health and wellbeing advice. This is available Monday-Friday from 9am-5pm.

Parents of children 0-4 years: Text 07480 635514

Parents of children 5-19 years: Text 07480 635515



# Online Safety Update

Online safety for children is everyone's responsibility. The best way to know what your child is doing online, is to keep talking to your child about what they are enjoying playing or doing online. Having open communication is the way to make any online activity transparent. It will help you as parents and your child to keep safe online.

## Social Media Settings



Most social media apps are 13+ (WhatsApp is 16+) but - as we are aware some children are using them regularly - we wanted to share some important settings to keep children safe online.



### Instagram



**PRIVATE ACCOUNT:** when this is on, only followers can see your posts and stories and you have to approve followers  
(recommended: on)

**COMMENTS, TAGS, MENTIONS, STORY:** allows you to control who can tag you, comment on your posts, mention you in their story and control your story audience

You can also restrict, block or report a user by clicking on their profile and selecting the three dots in the top right.

You can also remove a follower using this method.



### Tiktok



**PRIVATE ACCOUNT:** when this is on, only followers can see your posts and you have to approve followers (recommended: on)

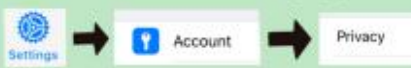
**SAFETY:** Tiktok has lots of options to restrict contact and interaction with video posts (recommended: friends)

**COMMENT FILTERS:** you can automatically hide comments that may have offensive words in (recommended: on)

You can also block, report or remove a follower by clicking on their profile and clicking the three dots in the top right hand corner.



### WhatsApp



**PROFILE PHOTO AND STATUS:** You can change who can see a profile photo and status (recommended: my contacts)

**GROUPS:** allows you to stop a contact being able to add you to groups (recommended for when a friend adds you without permission)

**BLOCKED:** can add a contact to a blocked list so they can't message you.

You can also block or report a contact/ number by clicking on the chat with them, clicking on their number/name at the top then scrolling down!



### Snapchat



**CONTACT:** decide who can message you and send you snaps (recommended: my friends)

**VIEW MY STORY:** restrict who can see your story (recommended: my friends)

**GHOST MODE:** if this isn't on, contacts can see your location on a map (recommended: on)

You can also block or report a user by locating their contact, tapping and holding their name and clicking more

Please check the settings on devices to keep your child safe online. Talk about what your child can do should they not understand something or feel uncomfortable with anything happening online.



# A message from our School Governors

## Financial Performance at St Aldhelm's

One of the three key responsibilities of a school governor lies with "overseeing financial performance of the school and ensuring money is well spent". This includes ensuring:

- There's financial oversight
- Leaders are held to account
- Money's spent correctly
- Spending is in line with the school's priorities

This time of the year is when a school receives its budget allocation from the Local Authority and has to carefully allocate its funds to areas that concern managing, maintaining and improving the school. As governors, the role of scrutinising and challenging this is deferred to a Finance and Premises Committee; of which Liam, Adam and myself serve alongside Mrs Cohen, Mrs Barton and our indispensable clerk, Mrs Sims.

Typically there are large spreadsheets and lots of numbers to work through; trying to ensure that all costings are catered for, whether that's extra books for a particular subject or covering spiralling energy prices. We'll compare this year's allocation to last year's figures, keeping an eye over the forecasted income and expenditure for the next few years ahead and use benchmarking tools to compare St Aldhelm's costs with other similarly sized schools to try and ensure value for money.

The main source of income stems from the number of pupils on roll along with Pupil Premium and Sports Grants; however the last two are closely tied to what areas they can fund and it is the governors responsibility to evaluate the impact against what was intended, such as the benefits introduced with the running track.

The budget should reflect plans outlined in the School Development Plan, a document that is created every year to shape the school's strategical plans for the year ahead. As the year progresses it is closely monitored to ensure expenditure is close to what was envisioned, however like most best-laid plans, you can usually count on the unexpected and the need to adapt accordingly.

In the face of rising costs and traditionally tight budgets, the combination of the school and governors' knowledge, experience and financial prudence, ensures that St Aldhelm's is meeting the financial challenges and is continuing to post a well-informed budget that achieves its aim of helping to deliver the school's ambitions.

*Chris Capon-Leyton*

Parent Governor

## Friends of St. Aldhelm's PTA

*A big thank you to all the parents who kindly brought in a donation for the Easter Bingo. It was a great success and it was lovely to see so many people enjoying themselves.*

*We will keep you posted of future events.*





# St. Aldhelm's Community News



## St Aldhelm's Church Plant Sale

**Saturday 14<sup>th</sup> May**

Please do pop along and take a look  
In the school hall 10am-12pm



Is your child showing signs of musical talent or ambition?

Our visiting music teachers are keen to hear of any children in Year 2 to 6 who would like to take up the opportunity of music lessons. We have piano, flute, violin and guitar on offer. Please call the school office or make direct contact, if your child is interested:

Becky Whiting – piano and flute - [bexnmoo@hotmail.com](mailto:bexnmoo@hotmail.com)

James Davidson – guitar – [jwfdavidson@yahoo.co.uk](mailto:jwfdavidson@yahoo.co.uk)

Helen Brock – violin – [helenbrock\\_hb@yahoo.co.uk](mailto:helenbrock_hb@yahoo.co.uk)

## Vacancies at St Aldhelm's Primary School

After School Club Supervisor – please see website for details

## Holiday Club



**BOOK NOW!**



**PLAY CREATE EXPLORE**

### West Pennard School

You're invited to the ultimate fun-filled holiday club!

All children welcome (4-11 years)

Wellbeing, games and arts & crafts all day!!!!

12/13/14/19/20/21 April, 9-3pm

\*\*extended care & lunches available\*\*

The great outdoors,  
arts & crafts,  
sensory fun,  
games & challenges,  
'stretch & shine',  
cosy zone and more!  
Visit our website for  
further details

from £22 per day or  
£60 for all 3 days!  
Sibling discount £20  
Extended care from  
£4

We are a Wellies, slippers and an anything  
inbetween zone; come and join in the fun!

\*\* For more info & to book: <https://generationbe.net/schools/>  
email: [info@generationbe.net](mailto:info@generationbe.net) or call: 07809110832

I am running a survey for parents to help us at GenerationBe to target and tailor the services that we offer them. There is a chance to win £50; £25 to a lucky parent and £25 for their school. Please follow the link:

<https://docs.google.com/forms/d/1LskfkrEsOoDvsvhZ3sBpCLedID7wXhAz0C6RRReetj8/edit>

Thank you for your support and good luck!

**Min Robertson**

[www.generationbe.net](http://www.generationbe.net)